



Custom-made Field and Fish waders

Last Name : _____ First Name: _____

Adresse : _____

CP : _____. City: _____

Province/State: _____ Country: _____

Phone number : _____ Email : _____

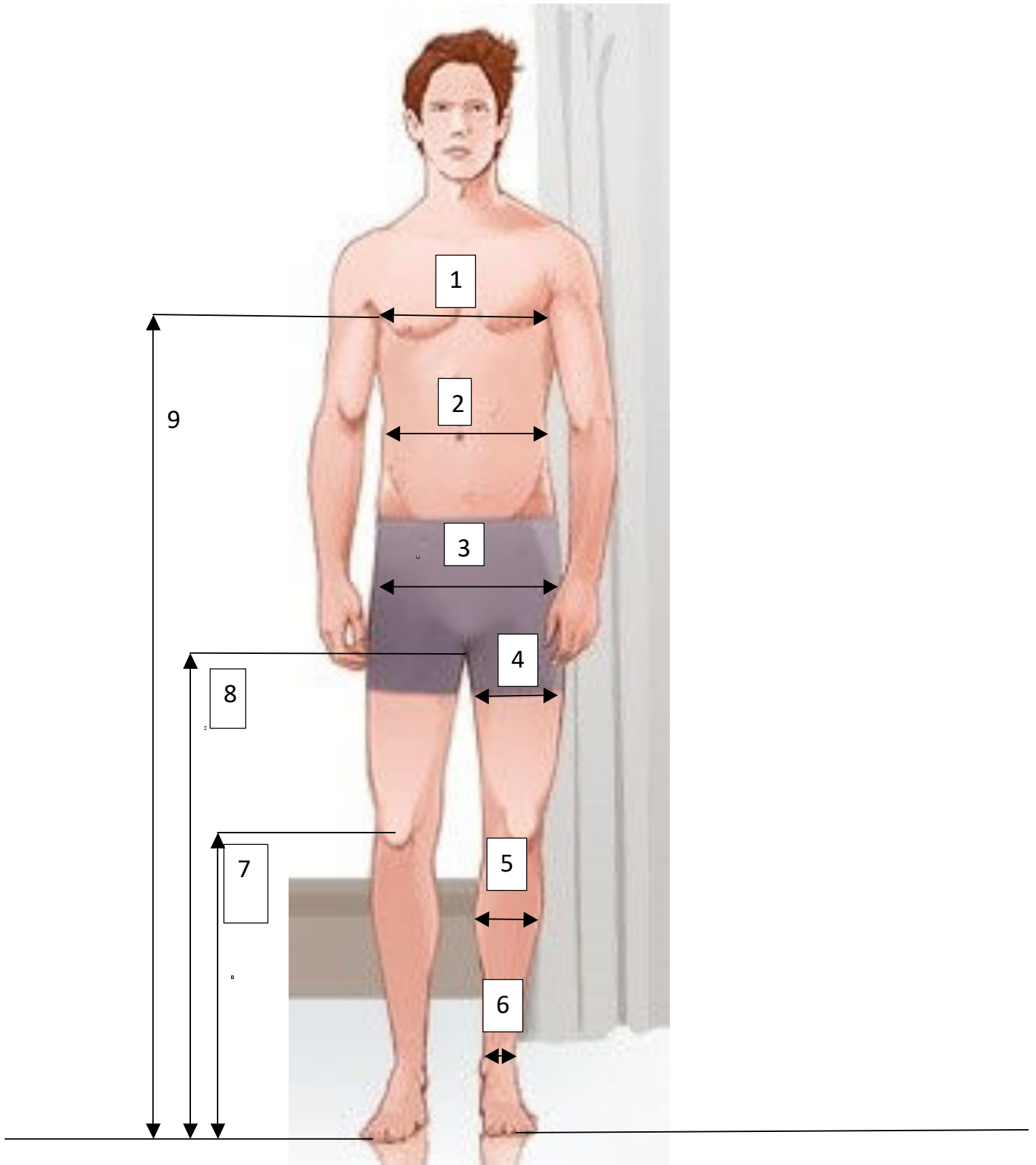
Please return this signed printed form to us, making sure to complete all the requested information. This document will serve as your measurement sheet, so please complete it carefully and clearly.

For the measurement sheet: measurements should be taken in cm. Do not hesitate to contact us if you would like more information.

You can see more details on our website **www.fieldandfish.com**, with a video showing the measurements. The model and cut of the waders will be those presented on the website. The only color is gray.

The price of custom-made waders, including shipping, is €599 including VAT (20% VAT), including shipping for mainland France. To process your order, you must validate it on the website by choosing the desired payment method (credit card, bank transfer, check, PayPal, or cash if collection is made at the showroom). Production of the waders will only be launched after receipt of the measurement sheet and payment.

The production and delivery time will be approximately 8 to 10 weeks between the date of confirmation of your order (receipt of this completed document and deposit on order received) and the date of delivery to your home. This time may be longer depending on the stock status of raw materials available at the time of ordering.



Special remarkss: _____

1: Chest circumference: _____ cm

Measure as horizontally as possible at the fullest part of the chest without inflating the torso

2: Waist circumference: _____ cm

Measure without sucking in the stomach, passing through the small of the back and the navel

3: Hip circumference: _____ cm

Measure as horizontally as possible at the fullest part of the buttocks

4: Thigh circumference: _____ cm

Measure over the fullest part of the thigh

5: Calf circumference: _____ cm

Measure at the fullest part of the calf

6: Ankle circumference: _____ cm

Measure passing through the most prominent points of the external and internal malleolus

7: Height from the kneecap to the floor: _____ cm

Measure from the center of the kneecap to the floor

8: Crotch height: _____ cm

Measure from the crotch to the floor, spreading very wide apart Slightly spread your feet (4 cm) just to allow room for the tape measure. Add 4 to 5 cm for greater comfort.

9: Chest height: _____ cm

Measure from the armpit to the floor

Normal shoe size in French sizes (e.g., 42): _____

Measure the length of your foot in cm from the heel to the tip of the longest toe: _____ cm

Date

Signature

To return : SAS HURUNUI – Field and Fish – 1590 route du fier 74230, Dingy-saint-clair, France ou au
info@fieldandfish.com